



## Hoist Catalog



- Hand Chain Hoists
- Manual Hoists
- Cable Hoists
- Electric Hoists
- Air Hoists
- Trolleys

Little Mule Construction Products offers a comprehensive line of hoists that address an array of lifting, pulling, and positioning activities. Traditional manual hoists provide smooth vertical lifts, while the innovative Hurricane 360 permits workers to lift at various angles. Lever tools are ideal for holding or positioning loads during maintenance activities. Powered hoists are available in both air and electric varieties and feature a wide range of working load limits to tackle numerous jobs.

In addition to a wide range of hoists and trolleys, Little Mule Construction Products offers numerous items for load attachment and lifting applications on the jobsite:

- Alloy Lifting Slings
- Hooks
- Shackles
- Lifting Clamps
- Wire Rope Clips
- Load Binders
- Spreader Beams
- Binder Chain Assemblies
- Cable

For complete information on any portion of our program, contact us at:

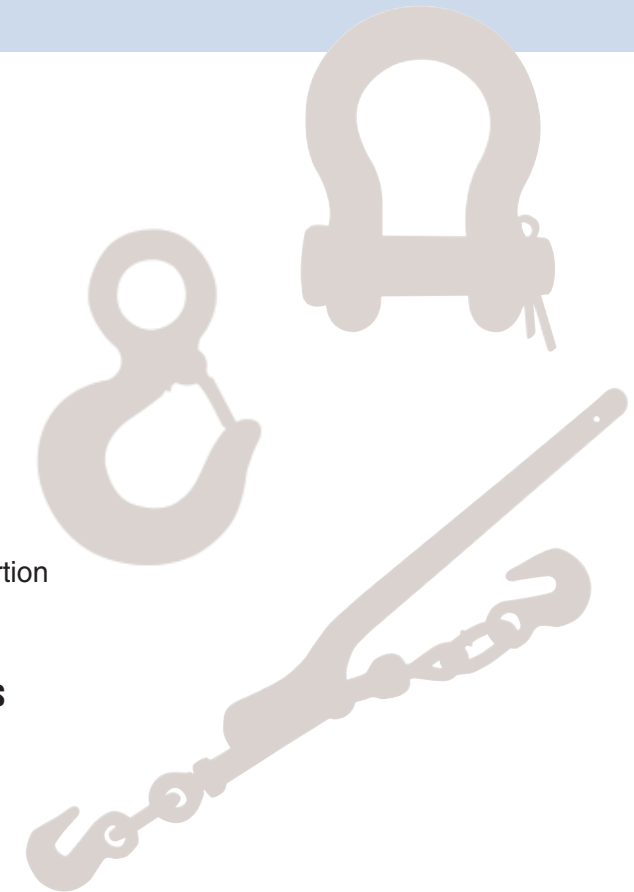
### Little Mule Construction Products

Tel: 888-550-1188 ¥716-689-5434

Fax: 716-689-5616

Email: [littlemulecp@cmworks.com](mailto:littlemulecp@cmworks.com)

[www.littlemulecp.com](http://www.littlemulecp.com)



# CABLE HOISTS

Designed for Reliability Durability & Versatility

## Engineered for Reliable Operation

- Handle Designed for Overload Protection—Handle bends to warn of hazardous condition and prevent dangerous overload.
- Hooks with Latches—360° swiveling hooks equipped with latches for positive load engagement.
- Positive Load Holding in All Environments—Double interlocking pawl mechanism assures one pawl is engaged at all times.
- Meets or exceeds minimum 4:1 design factor and all requirements of ASME/ANSI Standard B-30.21. All units tested at 125% of rated load.

## Portable and Durable

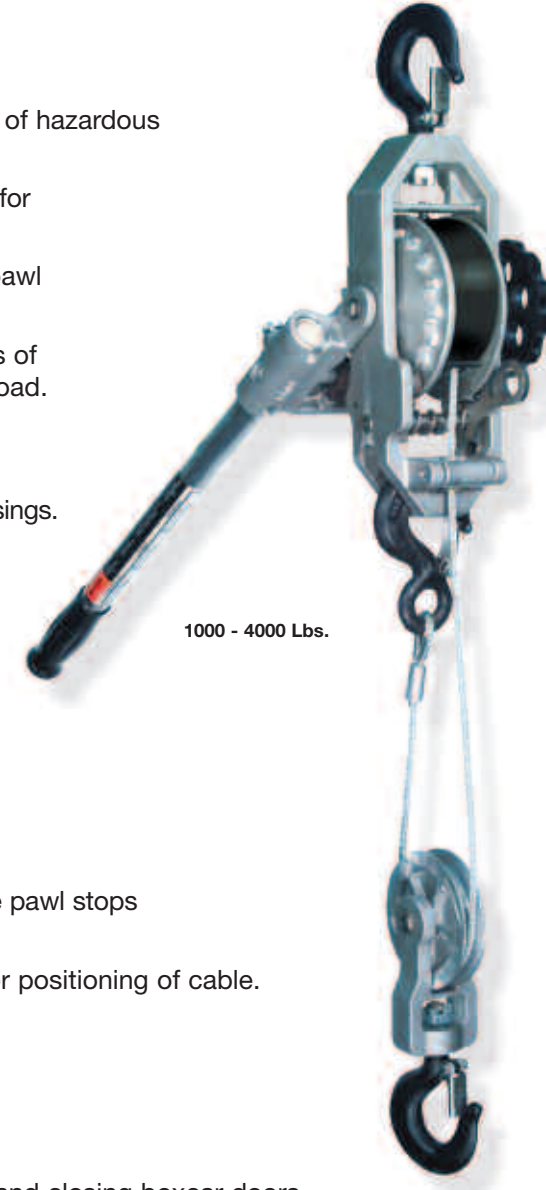
- Lightweight and Rugged—Special cast aluminum and zinc alloy housings.
- Heavy-Duty Cable—Utilizes preformed and galvanized, extra flexible aircraft cable.
- Corrosion Resistant—All stainless steel springs and shafts.
- Reduced Wear—All rotating shafts are mounted on bronze bushings.

## Easy to Operate

- Self-Storing Cable Drum—Provides compact operation.
- Easy Load Positioning—Utilizes a double pawl system with multiple pawl stops for precise load adjustment.
- Fast Cable Take-Up—Winding wheel provided for quick take-up or positioning of cable.
- Open Construction—Allows for easy cleaning and inspection.
- Made in U.S.A.

## Special Model Features

- 430CDPA equipped with oversized slip hooks—Ideal for opening and closing boxcar doors.
- Stainless Steel Cable Available—Suitable for marine environments.



1000 - 4000 Lbs.



## Specifications

Single & Double Line Cable Hoist • 1000 - 4000 Lbs.

Product code	SINGLE LINE			DOUBLE LINE			Cable Diameter (in.)	Ship Weight (lbs.)
	Capacity	Lift Hook	Hook to	Capacity	Lift Hook	Hook to		
105SB	1000	40	20	-	-	-	3/16	12 1/2
115SB	1000	23	20	-	-	-	3/16	11
115DB	1000	23	20	2000	11 1/2	27	3/16	14
505NB	1500	17	20	-	-	-	1/4	11 1/2
202WNB	1500	17	20	3000	9	27	1/4	14
434WNB	1500	22	20	3000	11	27	1/4	15 1/4
430CDPB	1500	22	20	3000	11 1/4	27	1/4	17
404WNB	2000	17	20	4000	8 1/2	27	9/32	16 1/2
404WNB/MC	2000	17	20	4000	8 1/2	27	9/32	16 1/2

Stamped Steel - Ideal for Construction

# Model LMHA

## Special Model Features

- Rated loads from 1/2 to 20 tons in stock with standard lifts of 10, 15, and 20 feet. Standard hand chain drop is 2-feet less than lift. Other lifts and hand chain drops, and 25 - 50 ton models available — consult factory.
- Mechanical load brake engages instantly for precise load holding and positioning. 360° swivel hooks with latches for positive load engagement.
- Through hardened load chain provides added strength and wear resistance for greater chain life. Stamped steel housing withstands rugged use.

## Easy & Reliable Operation

- Designed for portability and easy installation. Compact gear housing provides low headroom.
- Lubricated bearings and bushings, bearing-mounted pinions, and heat-treated spur gearing ensure smooth and efficient operation with minimal effort.
- Designed for easy inspection and maintenance. Hoist can be dismantled easily with ordinary hand tools.
- Meets or exceeds minimum 4:1 design factor and all requirements of ASME/ANSI Standard B-30.16. All units tested at 125% of rated load.



1/2 - 20 Ton

## Specifications

LMHA Hand Chain Hoist • 1/2 - 50 Ton

Product code	Rated capacity (lbs.)	Standard lift (ft.)**	Strands of Load Chain	Minimum Headroom (in.)	Average Overhaul for 1 Ft. Lift (ft.)	Net Pull to Lift Rated Load (lbs.)	Weight for 10 Ft. Lift (lbs.)
LMHA-1000	1000	1/2	1	10 1/4	32	55	19
LMHA-2000	2000	1	1	11 13/16	56	53	25
LMHA-3000	3000	1 1/2	1	13 9/16	75	65	36
LMHA-4000	4000	2	1	15	75	74	45
LMHA-6000	6000	3	1	17 1/8	95	84	66
LMHA-10000	10000	5	3	22 5/8	203	79	75
LMHA-16000	16000	8	3	32 1/2	312.5	77	158
LMHA-20000	20000	10	3	32 1/2	312.5	95	158
LMHA-24000	24000	12	5	50 5/8	526	84	328
LMHA-30000	30000	15	5	50 5/8	526	103	328
LMHA-40000	40000	20	6	52 3/8	312.5 x 2 †	99 x 2 †	535

\*\* Standard lifts shown. Other lifts available — consult factory.

† 20 Ton models have two hand chains.

Note: For complete dimensional data, refer to Little Mule Dimensional DataBook (LMDB-2).

### Special Model Features

- Unique hand chain guide with 360° rotation allows the hoist operator to work from almost any position, allowing them to move away from a load and optimize their work.
- Standard load lifter for simple, automatic overload protection.

### Reliability and Low Maintenance

- Single disc brake design provides improved braking power with less wear, low maintenance and quiet operation.
- Frame and housing are made from impact resistant, stamped steel for long life in rugged environments. The powder coated finish provides corrosion protection.
- The internal gears and pinions are made of heat treated steel for high strength and long life.
- Fully machined 4-pocket liftwheel provides better chain fit which reduces wear and allows for accurate movement of the load chain.
- Alloy steel load chain assures high strength and long wear life.
- Meets or exceeds ASME B30.16 and European CE standards.

360° Rotating Hand Chain Guide



**Metric Rated**  
1/2-10 Tons  
500 kg-10,000 kg



### CM Hurricane—Specifications

Product code	Rated capacity (tons)	Standard lift (ft.)	Hand chain pull to lift rated load (lbs.)	Hand chain over-haul to lift load 1ft. (ft.)	Number of chain falls	Approximate shipping weight (lbs.)
5623	1/2	8	44	30	1	18.5
5624	1/2	12	44	30	1	23.0
5625	1/2	20	44	30	1	29.3
5626	1	8	54	49	1	26.5
5627	1	12	54	49	1	28.7
5628	1	20	54	49	1	39.7
5629	2	8	74	71	1	42.1
5630	2	12	74	71	1	47.8
5631	2	20	74	71	1	60.4
5635	3	8	92	87	1	67.9
5636	3	12	92	87	1	76.0
5637	3	20	92	87	1	91.9
5639	5	8	76	174	2	87.7
5640	5	12	76	174	2	95.8
5641	5	20	76	174	2	111.7
5643	10	8	102	261	3	148.5
5644	10	12	102	261	3	166.0
5645	10	20	102	261	3	202.7

### Compact Package with Great Standard Features

- Rated loads of 550 Lbs. (TB-602) and 1100 Lbs. (TB-603)
- Plated load chain is standard.
- Weston-type load brake.
- Rubber hand grip for better comfort and security.
- Forged upper and lower hooks with latches standard.

### Tough Construction — Easy Operation

- Impact resistant, all-steel frame, gear case and cover.
- Hardened link-type steel load chain for strength and long wear.
- Lightweight design for ease of portability. Use in confined conditions with one-hand operation.
- Free wheeling feature serves to quickly attach the load.
- Metric rated



### Specifications

TB-602 / TB-603 Mini Ratchet Lever Hoists • 550 Lbs. / 1100 Lbs.

Product code	Rated capacity (lbs. / kg.)	Number of Chainfalls	Chain Dimensions d x t (in.)	Handle Length (in.)	Min. Distance Between Hooks (in.)	Lift w/ One Full Lever Turn (in.)	Handle Pull @ W.L.L. (lbs.)	Net Weight w/ Standard Lift (lbs.)
TB-602	550 / 250	1	16 x 47	6.300	9.45	3.15	56	6.0
TB-603	1100 / 500	1	16 x 47	6.375	11.125	1.57	78	7.0



**The uses are Endless**

**Performs Just Like the Larger Hoists, but Small Enough to Fit in a Hard Hat**



## Rugged and Lightweight

- Rated loads of 3/4, 1 1/2, 3 and 6 tons, with 5, 10, 15, and 20 foot lifts.
- Impact resistant stamped steel housing withstands years of rigorous use.
- Compact design makes the LMSC extremely portable and easy to rig.
- Through hardened load chain provides high strength and resists wear.

## Easy To Operate

- Low handle effort is provided by double reduction gearing and short handle with cushioned, ergonomic grip. The result is easy operation with minimal handle effort.
- 360° rotating handle provides versatile rigging options when used in confined spaces.
- State-of-the-art free wheeling mechanism allows quick and easy one-handed take-up and positioning of slack chain.

## Engineered For Reliable Operation

- Optional load limiter alerts operator of a possible overload by allowing the handle to rotate without lifting the higher-than-rated load. The load limiter can be field-installed.
- Enclosed screw and disc-type load brake stays clean and dry for positive load holding and positioning. Latches on hooks assist load hookup.
- Meets or exceeds minimum 4:1 design factor and all requirements of ASME/ANSI Standard B-30.21. All units tested at 125% of rated load.

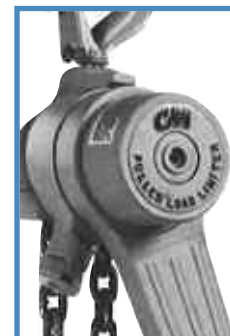
### Specifications

LMSC Ratchet Lever Hoist • 3/4 - 6 Ton

Product code	Rated capacity (lbs.)	Standard lift (ft.)**	Strands of Load Chain	Min. Distance b/w Hooks (in.)	Handle Length (in.)	Average Handle Effort (lbs.)	Net Weight (lbs.)
LMSC-1500	1500 3/4	5	1	11 5/8	9 1/4	46	12
LMSC-1510	1500 3/4	10	1	11 5/8	9 1/4	46	14
LMSC-1515	1500 3/4	15	1	11 5/8	9 1/4	46	16
LMSC-1520	1500 3/4	20	1	11 5/8	9 1/4	46	18
LMSC-3000	3000 1 1/2	5	1	13	14 9/16	59	21
LMSC-3010	3000 1 1/2	10	1	13	14 9/16	59	24
LMSC-3015	3000 1 1/2	15	1	13	14 9/16	59	27
LMSC-3020	3000 1 1/2	20	1	13	14 9/16	59	30
LMSC-6000	6000 3	5	1	16 15/16	14 9/16	75	35
LMSC-6010	6000 3	10	1	16 15/16	14 9/16	75	40
LMSC-6015	6000 3	15	1	16 15/16	14 9/16	75	45
LMSC-6020	6000 3	20	1	16 15/16	14 9/16	75	50
LMSC-12000	12000 6	5	2	22 3/4	14 9/16	76	67
LMSC-12010	12000 6	10	2	22 3/4	14 9/16	76	77
LMSC-12015	12000 6	15	2	22 3/4	14 9/16	76	88
LMSC-12020	12000 6	20	2	22 3/4	14 9/16	76	99



- Tough aluminum alloy construction and powder coat finish
- Weatherproof for outdoor service
- Hoistalloy hardened steel link type load chain for strength, long wear life and flexibility
- Weatherized Weston-type automatic braking system for positive load control
- Easy, one-hand operation and control – only 58 pounds of pull required for 3/4 ton model capacity
- Forged upper and lower hooks with latches standard
- Free wheeling for fast and easy attachment to load
- Optional Load Limiter protection device stops transmission of lever forces protecting against dangerous overload
- Optional anchor sling simplifies attachment to allow anchor hook to swivel in tight space applications (3/4 & 1 1/2 ton units only)
- Optional Load Sentry warns of overload condition
- Optional shorter lever for 3/4 and 1 1/2 ton units available
- Optional zinc-plated chain available
- Unlimited lift
- Metric rated
- Made in U.S.A.



Optional Load Limiter



Optional anchor sling (3/4 and 1 1/2 ton)

### Specifications

Product code	Rated capacity	Standard lift (ft.)*	Pull to Lift Full Loads (lbs.)	Min. Distance b/w Hooks (in.)	Lever Length (in.)	Reeving	Hook Throat Openings (in.)	Approx. Shipping Weight (lbs.)
4043	3/4	5	58	10 3/4	21 1/4	1	1 1/32	16
4060	3/4	10	58	10 3/4	21 1/4	1	1 1/32	20
4061	3/4	20	58	10 3/4	21 1/4	1	1 1/32	26
4045	1 1/2	5	89	14 1/4	21 1/4	1	1 1/8	26
4062	1 1/2	10	89	14 1/4	21 1/4	1	1 1/8	31
4063	1 1/2	20	89	14 1/4	21 1/4	1	1 1/8	40
4047	3	5	95	16 15/16	21 1/4	2	1 7/32	38
4065	3	10	95	16 15/16	21 1/4	2	1 7/32	47
4066	3	20	95	16 15/16	21 1/4	2	1 7/32	65
4050	6	5	96	21 3/8	21 1/4	4	1 3/4	73

\* Other lifts available, please contact factory for assistance

### Approx. Additional Weight of Installed Options

Load Limiter	Load	Anchor Sling
4 lbs.	2 lbs.	2 lbs.

## Rugged and Lightweight

- Rated loads of 3/4, 1, 1 1/2, and 3 tons, with 5, 10, 15, and 20 foot lifts.
- Unit and handle made from high strength ductile aluminum alloy. Compact design increases portability and rigging efficiency.

## Easy & Reliable Operation

- Double reduction gearing and short handle provide lowest handle effort in the Little Mule line.
- Provides versatile rigging options when used in confined spaces.
- State-of-the-art free wheeling mechanism allows quick and easy one-handed take-up and positioning of slack chain.
- Meets or exceeds minimum 4:1 design factor and all requirements of ASME/ANSI Standard B-30.21. All units tested at 125% of rated load.

## Special Model Features

- Enclosed self-adjusting screw-and-disc type load brake stays clean and dry - eliminating drift and backlash for positive load control. 25° minimum lever stroke allows “micro-inching” load positioning.
- Hardened steel load chain provides high strength and resists wear. Alloy steel spur gearing is heat-treated for long life and is lifetime lubricated.



## Specifications

LMR Ratchet Lever Hoist • 3/4 - 3 Ton

Product code	Rated capacity (lbs.) (tons)		Standard lift (ft.)*	Strands of Load Chain	Min. Distance b/w Hooks (in.)	Handle Length (in.)	Average Handle Effort (lbs.)	Net Weight (lbs.)
LMR-1500	1500	3/4	5	1	12	12	37	15
LMR-1510	1500	3/4	10	1	12	12	37	17
LMR-1515	1500	3/4	15	1	12	12	37	19
LMR-1520	1500	3/4	20	1	12	12	37	21
LMR-2000	2000	1	5	1	13	12	49	15
LMR-2010	2000	1	10	1	13	12	49	17
LMR-2015	2000	1	15	1	13	12	49	19
LMR-2020	2000	1	20	1	13	12	49	21
LMR-3000	3000	1 1/2	5	1	14 1/2	12	41	25
LMR-3010	3000	1 1/2	10	1	14 1/2	12	41	29
LMR-3015	3000	1 1/2	15	1	14 1/2	12	41	33
LMR-3020	3000	1 1/2	20	1	14 1/2	12	41	37
LMR-6000	6000	3	5	2	17 1/2	16	61	41
LMR-6010	6000	3	10	2	17 1/2	16	61	48
LMR-6015	6000	3	15	2	17 1/2	16	61	55
LMR-6020	6000	3	20	2	17 1/2	16	61	62



## Versatile Operation

- Rated loads from 1/4 to 2 Ton Metric Rated. Standard lifts of 10, 15 and 20 feet. Other lifts available. CSA approved.
- Voltages — 115/230 - single phase; 230/460, 208, 575 - three phase, 60 Hertz Standard, 50 Hertz available.
- IEC style controls meet or exceed electrical codes.
- H4 Duty Rating — Handles heavy duty work environments
- Made in U.S.A.

## Special Model Features

- Five -Pocket Load Sheave increases chain and sheave engagement 25% over hoists with conventional load sheaves. Provides smoother lifting and reduces chain wear.
- Adjustable limit switches regulate upper and lower load travel. Brass nuts standard for improved repeatability and chain positioning.
- Mechanical Overload Protection Device — Helps protect hoist, operator, and supporting structures from damaging overloads, chain jamming and reverse phasing.
- Multiple Disc Motor Brake — Heavy duty design for reliable operation. Direct acting for positive load holding and spotting.
- Molded quick connect standard chain container prevents slack chain from interfering with operator. 20 Ft. lift single reeved, 10Ft. lift double reeved.
- One Chain Size — All models reduce inventory.
- Top Suspension — Quick-change from hook mount to lug mount.
- Weather Resistant — Hoist is NEMA 3R enclosure.



## Specifications

FLC Electric Chain Hoist • 1/4 - 2 Ton

Product code	Rated capacity (lbs.) (tons)		Number of Chains	Motor HP	Lift Speed (FPM)	Headroom (in.)	Housing Dimensions (in.)			Net. Weight (lbs.)
	H	W					L			
FLC-0156	500	1/4	1	1/2	16	18 1/8	18 11/16	8 11/16	24 1/8	63
FLC-0532	500	1/4	1	1/2	32	18 1/8	18 11/16	8 11/16	24 1/8	75
FLC-1016	1000	1/2	1	1/2	16	18 1/8	18 11/16	8 11/16	24 1/8	75
FLC-1032	1000	1/2	1	1	32	18 1/8	18 11/16	8 11/16	24 1/8	88
FLC-2016	2000	1	1	1	16	18 1/8	18 11/16	8 11/16	24 1/8	90
FLC-4008	4000	2	2	1	8	20 13/16	18 11/16	8 11/16	24 1/8	100

Weight and dimensions for 10 ft. lift, single phase, top hook units.

# Model SLM

The Perfect Shop Hoist — Easy to Use, H4 Duty

## Easy to Use

- Small, compact design - commercial & industrial applications.
- Lightweight and portable. Easy installation and maintenance.
- H4 duty cycle (300 motor starts/hour).
- Made in U.S.A.

## Special Model Features

- Friction-type overload device prevents lifting excessive overloads.
- 10-pocket oblique lay liftwheel provides longer chain life and extended service.
- NEMA 4 industrial-rated pendant control.
- Lifetime, grease-lubricated gear train—less maintenance.
- Alloy load chain (zinc plated optional).
- Thermally protected motor prevents damage from possible overheating.
- D.C. braking system for positive load control.
- Durability — Epoxy powder-coat finish on rugged cast aluminum alloy frame.



250 - 1000 Lbs.  
Made in USA



The SLM is about 12" in length,  
and weighs less than 35 lbs.

## Specifications

SLM Electric Chain Hoist • 250 - 1000 Lbs.

Product Number	Capacity (lbs.)	Number of Chains	Lifting Speeds (FPM)	Headroom (in.)	Housing Dimensions (in.)			Ship Wt. (lbs.)
					H	W	L	
SLM-0216	250	1	16	11 1/16	1 1/16	5 15/16	12 1/2	28
SLM-0224	250	1	24	11 1/16	1 1/16	5 15/16	12 1/2	28
SLM-0240	250	1	40	11 1/16	1 1/16	5 15/16	12 1/2	28
SLM-0316	300	1	16	11 1/16	1 1/16	5 15/16	12 1/2	28
SLM-0324	300	1	24	11 1/16	1 1/16	5 15/16	12 1/2	28
SLM-0340	300	1	40	11 1/16	1 1/16	5 15/16	12 1/2	28
SLM-0508	500	2	8	11 1/16	1 1/16	5 15/16	12 1/2	34
SLM-0512	500	1	12	11 1/16	1 1/16	5 15/16	12 1/2	28
SLM-0516	500	1	16	11 1/16	1 1/16	5 15/16	12 1/2	28
SLM-0520	500	2	20	11 1/16	1 1/16	5 15/16	12 1/2	34
SLM-0524	500	1	24	11 1/16	1 1/16	5 15/16	12 1/2	28
SLM-0608	600	2	8	11 1/16	1 1/16	5 15/16	12 1/2	34
SLM-0612	600	2	12	11 1/16	1 1/16	5 15/16	12 1/2	34
SLM-0620	600	2	20	11 1/16	1 1/16	5 15/16	12 1/2	34
SLM-1006	1000	2	6	11 1/16	1 1/16	5 15/16	12 1/2	34
SLM-1008	1000	2	8	11 1/16	1 1/16	5 15/16	12 1/2	32
SLM-1012	1000	2	12	11 1/16	1 1/16	5 15/16	12 1/2	32

**Note:** Standard lifts 10 ft. Other lifts available. Standard push button drop is 4 ft. less than lift.  
Voltages - 115V - single phase (models available with contactor in PB station)  
230V, 460V, 575V - 3-phase, 60 Hertz

Easy Hoisting — Compact and Portable

# Model LMES

## Easy to Use

- Rated loads 1/4, and 1/2 ton. 10, and 20 foot lifts standard.
- Rated for light-duty operation; intermittent duty applications.
- Voltage - 115/1/60
- Rigid top hook and swivel bottom hook with latches standard.
- Provided with grounded 3-prong plug for easy installation in any standard 115-volt outlet.
- Made in U.S.A.

## Rugged and Portable

- Lightweight and compact to provide strength and portability. Weighs less than 25 lb.
- Hardened steel, self-locking Helicon® gears work as a brake to hold load even if power is interrupted. Permanent lubrication of gears minimizes maintenance.
- State-of-the-art free wheeling mechanism allows quick and easy one-handed take-up and positioning of slack chain.
- Manganese alloy load chain is heat treated for high strength.

## Special Model Features

- Upper and lower limit switches regulate load travel.
- Heat treated steel alloy load sheave provides smooth lifting.
- Includes durable, fabric chain container.
- Overload sensor protects against jamming and dangerous overloads. Red light on underside of unit alerts operator if overload is attempted.
- Ergonomically designed push button fits operator's hand for easy operation.



500 & 1000 Lbs.  
Made in USA

## Specifications — Spark Resistant Models

Model	Capacity	No. of Standard	Motor	Lift Speed	Headroom	Housing Dimensions (in)				
Net Wt.										
LMES-0512-10/115V	500	1/4	1	10	0.3	12	14 1/4	4 1/4	5 1/4	9 3/4
115V	16									
LMES-0512-20/115V	500	1/4	1	20	0.3	12	14 1/4	4 1/4	5 1/4	9 3/4
115V	18									

**Note:** This hoist is designed for light-duty, consumer or commercial use and is not intended for heavy-duty industrial applications.

LMES-1006-10/115V  
1000 1/2 2  
10 0.3



300 Lb. model shown with optional chain container

- Standard Protector™ overload device.
- 10-pocket, oblique lay liftwheel provides longer chain life.
- Rugged cast aluminum alloy hoist frame and Epoxy powder coat finish provides a durable exterior.
- Durable reduction gearing means reliable operation.
- Variable flow, two lever pendant for precise load spotting.
- Threaded external exhaust for piping away exhaust in clean room or painting applications.
- Industrial duty air motor for tough applications.
- Gear train is lifetime - lubricated with non-oxidizing grease.
- Hardened forged steel, latch - type lower hook rotates 360°.
- Hardened forged steel, rigid latch - type upper hook.
- Alloy load chain.
- Maximum pendant drop - 36 ft.
- Made in U.S.A.

**CAPACITIES:** 250 to 1,000 Lbs.

**NORMAL OPERATING PRESSURE:** 90 PSI (6.2 bar)

**AIR CONSUMPTION:** 34 cu.feet/min.

### Specifications

Product code	Rated capacity (lbs.)	Standard lift (ft.)	Number of Load Chain	Speed FPM (under full load)		Shipping Weight (lbs.)
				Lifting	Loading	
2178	250	10	1	31	83	30
2180	300	10	1	31	83	30
2182	500	10	1	21	55	30
2179	500	10	2	16	42	34
2181	600	10	2	16	42	34
2183	1,000	10	2	11	38	34



- Hoist alloy load chain for heavy duty or stainless steel chain for spark resistant, medium duty loads
- Positive action, heavy-duty shoe type brake that holds the load
- Multi-vane rotary air motor for high torque, smooth operation
- Pull cord control hoists provide a lightweight, economical hoist for accurate control of loads, while pendant throttle control offer ergonomic, one-hand control for ease of operation
- Inlet air swivel with built-in strainer provides free hoist movement
- External brake adjustment
- Limit stops prevent over-travel in upper and lowering directions
- Equa-torque gearing of alloy steel, heat treated spur gears are accurately machined to provide a close meshed, compact gear reduction
- Tapped exhaust port 1/2 NPTF... for cleanroom applications or to add a supplemental muffler in addition to the built-in muffler for even quieter operation
- Metric rated
- Made in U.S.A.
- **Air Consumption:** 48 SCFM at 90 PSI (recommended)
- **Air Inlet:** 3/8 NPTF, **Air Supply Hose:** 1/2 I.D. min.

### Specifications – Standard Models

Type	Rated Capacity* (tons)	Swivel Hook Suspension				Lug Suspension				Reeving	Lifting Speed max † (FPM)	Lowering Speed max † (FPM)
		Product Code	Approx. Ship Wt. (lbs.)	Product Code	Approx. Ship Wt. (lbs.)	Product Code	Approx. Ship Wt. (lbs.)	Product Code	Approx. Ship Wt. (lbs.)			
Link Chain	1/4	7400C	36	7400D	46	7400F	36	7400G	46	1	65	95
	1/2	7401C	36	7401D	46	7401F	36	7401G	46	1	45	120
	1	7402C	49	7402D	59	7402F	49	7402G	59	2	23	60
Roller Chain	1/4	7400A	37	7400B	47	-	-	-	-	1	65	95
	1/2	7401A	37	7401B	47	-	-	-	-	1	45	120
	1	7402A	51	7402B	61	-	-	-	-	2	23	60

### Specifications – Spark Resistant Models

Type	Rated Capacity* (tons)	Swivel Hook Suspension				Lug Suspension				Reeving	Lifting Speed max † (FPM)	Lowering Speed max † (FPM)
		Product Code	Approx. Ship Wt. (lbs.)	Product Code	Approx. Ship Wt. (lbs.)	Product Code	Approx. Ship Wt. (lbs.)	Product Code	Approx. Ship Wt. (lbs.)			
Link Chain	3/8	7403A	36	7403B	46	7403C	36	7403D	46	1	60	100
	3/4	7404A	49	7404B	59	7404C	49	7404D	59	2	29	52

Note: Standard lifts 10 ft. Contact factory for longer lifts.

\*\* Equipped with 6 ft. pendant control

† Speeds based on 90 PSI line pressure and with full rated hoist load

Hoist speeds are adjustable and can be reduced to 50% of full rated speed. Shipped from factory with lifting speed set at maximum and lowering speed set at reduced speed.



## Engineered for Reliability & Versatility

- Rated loads from 1 to 3 tons, with standard wire rope length of 32 feet on 1 and 3 ton models; 65 feet on 2 ton model.
- Designed for heavy-duty pulling, rigging, dragging, stretching and lifting applications. Its versatility and ability suits this tool perfectly for use in the construction and transportation industries, as well as hundreds of other industrial applications.
- The large surface area of the dual clamping jaws provide an evenly distributed grip on the wire rope for smooth operation and low wear.
- Limitless wire rope travel provides versatility for use over long distances.
- The greater the force of the pull, the greater the clamping force of the jaws. Unique jaw design prevents damage to the wire rope.
- Easily replaceable shear pin design protects against dangerous overloads.

## Easy to Operate

- Lightweight and compact design aides portability, yet built tough for long life and trouble-free service.
- Telescopic handle enhances portability and ease of operation.
- Periodic cleaning, inspection, and lubrication is all that is required for minimal maintenance.

### Specifications – Spark Resistant Models

GT Wire Rope Lever Tool • 1 - 3 Ton

	Rated Capacity (tons)	Product Code	Standard Wire Rope Length (ft.)	Wire Rope Diam. (in.)	Lever Length Extended (in.)	Lever Length Retracted (in.)	Rope Advance† (in.)	Overall Dimensions (in.)	Net Weight* (lbs.)	Net Weight** (lbs.)
GT-1300-32	1	0013	32	5/16	29.1	21.3	1.30	19.7 x 9.1 x 4.0	35	18
GT-2000-65	2	0020	65	7/16	29.1	21.3	1.45	24.8 x 13.0 x 5.9	79	40
GT-3500-32	3	0035	32	5/8	29.1	21.3	0.78	29.6 x 12.8 x 7.0	94	66

† Per full stroke at rated load.

\* Wire rope included

\*\* Less wire rope.

- Negotiates radius curves as tight as 7 to 10 inches
- Made of highest quality rolled steel
- Unique double row, ball bearing wheel design for greater wear capacity
- Larger V-bars available for wider flange adjustment
- For low headroom applications
- Bearings prepacked with lifetime lubricant
- Exclusive Dial-Fit collar quickly adapts trolley to wide range of beams and patented rails
- Dust covers shield and protect bearings
- Trolleys available for larger beams, rails or tracks; contact CM
- Cast iron trolley guards available (except for 3 ton)
- Made in U.S.A.

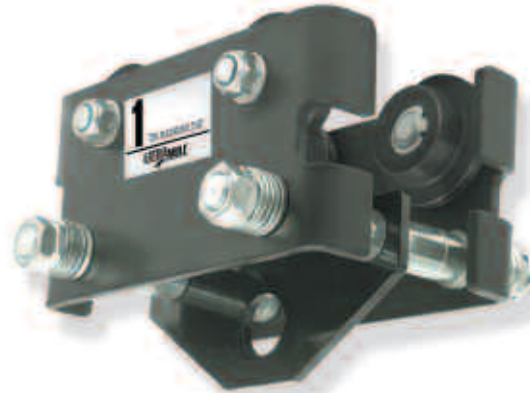


### Specifications

Product code	Rated capacity*	Adj. for Standard S-beams		Tread Diameter (in.)	Net Weight (lbs.)	Shipping Weight (lbs.)	Min. Radius Curve (in.)
		Depth of beam (in.)	Flange width (in.)				
3222	1/4 - 1/2	4 - 12	2 5/8 - 5 1/16	2 3/4	9	10	7
3224	1	4 - 12	2 5/8 - 5 1/16	2 3/4	10	12	7
3226	1 1/2 - 2	6 - 15	3 3/8 - 5 5/8	3 1/2	23	25	10
3230	3	8 - 18	4 - 6 1/4	3 1/2	29	33	10

All capabilities can be supplied for S-beams larger than listed and also for wide flange beams, rails or tracks with approximately equivalent flange widths.





CBTP (Plain)  
1/4 to 5 Ton

## CBT Model Trolleys

- Rated loads from 1/4 to 5 Ton (Metric Rated).
- Trolley easily adjusts to fit any beam flange within range of adjustment, up to an 8.7" flange width.
- Dual Tread Wheels fit either tapered or flat beam flange within range of adjustment. Wheels include permanently lubricated, shielded ball bearings for long life and low maintenance.
- Low Rolling Effort
- Wrap-around side plates provide additional security to increase operator safety and act as bumpers to protect wheels.
- Universal Hanging Clevis accepts most hook mounted hoists.
- Rugged — Designed to provide superior performance and long, efficient service.
- Economical — Excellent low cost choice for manual and powered hoists.

### Specifications

CBT Plain & Geared Trolleys • 1/4 - 5 Tons

Product code	Rated capacity* (tons)	Standard Beam Height (in.)	I-Beam Width (in.)	Minimum Radius Curve (in.)	Wheel Tread Diameter (in.)	Weight (lbs.)
CBTP-0025	1/4	4 - 24	2.0 - 8.7	27	2.36	19
CBTP-0050	1/2	4 - 24	2.0 - 8.7	27	2.36	19
CBTP-0100	1	5 - 24	2.3 - 8.7	36	2.36	26
CBTP-0150	1 1/2	6 - 24	2.3 - 8.7	45	3.15	46
CBTP-0200	2	6 - 24	2.3 - 8.7	45	3.51	46
CBTP-0300	3	8 - 24	2.0 - 8.7	55	4.41	86
CBTP-0500	5	10 - 24	2.0 - 8.7	70	4.92	130

\* Metric Rated

Note: Gear model available for 1 ton units and above.

## LMTG & LMTG Trolleys

- Rated loads from 8-16 tons in plain and geared models. Geared trolleys have standard 7-foot hand chain drop.
- Designed for heavy-duty industrial applications.
- Hanging clevis accepts all Little Mule hook-mounted hoists. Steel equalizing pin can be used to suspend hoist for low headroom applications.
- Adjustable — Fits a wide range of beam sizes.
- Wrap-around side plates act as trolley guards and bumpers for added security and wheel protection.
- Ball Tread Wheels — Cast iron wheels (8-16 Ton models) fit any tapered or flat beam flange within range of adjustment. Each wheel has two lifetime lubricated, sealed tapered roller bearings for long life and low maintenance.
- Options — Wide flange and patented track models available. Spark resistant units available in 4 to 8 Ton models.



LMTG (Plain)  
8 - 16 Ton



LMTG (Geared)  
8 - 16 Ton

### Specifications

LMTG / LMTG Plain & Geared Trolleys • 8 - 16 Tons

Product code	Capacity (lbs.)	Capacity (tons)	Beam Height (in.)	I-Beam Flange Width (in.)	Min Radius Curve (in.)	Net Weight Plain	Net Weight Geared
LMTG (G) - 16000	16000	8	10 - 24	4.66 - 7.00	60	255	295
LMTG (G) - 16000	20000	10	10 - 24	4.66 - 7.00	60	274	310
LMTG (G) - 16000	24000	12	10 - 24	4.66 - 7.00	60	278	320
LMTG (G) - 16000	32000	16	18 - 24	6.00 - 8.00	96	800	840

\* When ordering specify "P" for plain trolley or "G" for geared trolley.

Note: LMTG & LMTG trolleys up to 40 ton capacity available upon request - consult factory

## BC Beam Clamps

- Rated loads from 1-10 Ton.
- Reduced flange stress — Special clamp jaw design distributes load away from flange edge.
- Threaded mechanism fits securely on a wide range of flange widths and beam sizes.
- Low headroom provided by built-in suspension bar.



1 - 10 Ton

### Specifications

BC Beam Clamps • 1 - 10 Tons

Product code	Rated capacity (lbs.)	Rated capacity (tons)	Flange Width (in.)	Weight (lbs.)
BC-1	2000	1	1	3 - 9
BC-2	4000	2	2	3 - 9
BC-3	6000	3	3	3.2 - 12.6
BC-18			18	

## Easy to Use

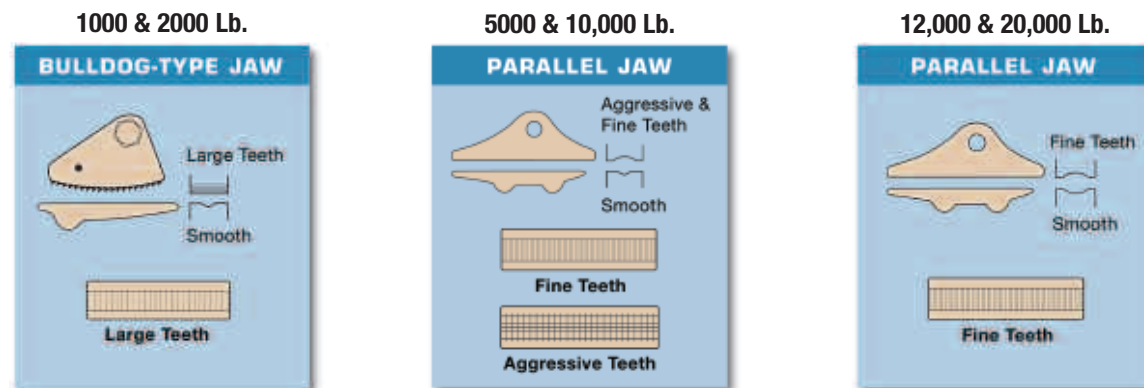
- Versatility—All models are rated for a variety of wire sizes and types, so fewer grip changes are required.
- Grips open easily and release instantly to quickly insert or remove wire.
- Large handle eye opening accepts standard hooks and easily attaches to tackle blocks.
- Choice of Design—Standard or Aggressive Jaw models.

## Rugged and Portable

- Forged steel construction is durable yet lightweight.
- Yellow chromate finish protects components from rust and corrosion.



## Jaw Options



## Specifications

LMG Standard Wire Grip • 1000 - 20,000 lbs.

Product code	Rated capacity	Minimum Size	Wire Size		Maximum Size	Handle Eye Opening (in.)	Net Weight (lbs.)
			Gauge	Size			
LMG1000*	1000	.04	18 AWG	.394	1 / DAWG	.625 dia.	1/2
LMG2000*	2000	.109	8 AWG	.594	4 / DAWG	1 x 1 1/2	1
LMG4500	5000	.18	6 AWG	.60	4 / DAWG	1 1/4 x 1 3/4	3 1/4
LMG14500A**	5000	.18	6 AWG	.60	4 / DAWG	1 1/4 x 1 3/4	3 1/4
LMG4600	10000	.30	1 AWG	.80	450 MCM	1 1/4 x 1 3/4	4 1/2
LMG4600A**	10000	.30	1 AWG	.80	450 MCM	1 1/4 x 1 3/4	4 1/2
LMG4800	12000	.70	397 MCM	1.25	1130 MCM	1 1/4 x 1 3/4	8
LMG4700	20000	.70	397 MCM	1.25	1130 MCM	2 1/2 x 3 1/2	21

\* 1000 and 2000 lb. models have Bulldog-Type Jaw. All other models have Parallel Jaw.

\*\* Has jaw for use with extra high strength cable. More aggressive tooth design reduces possibility of cable damage.

**Little Mule Construction Products**  
 140 John James Audubon Parkway Amherst, NY 14228-1197  
 Tel: 888-550-1188 ¥716-689-5434 ¥Fax: 716-689-5616  
 Email: [littlemulecp@cmworks.com](mailto:littlemulecp@cmworks.com)

[www.littlemulecp.com](http://www.littlemulecp.com)

## WARNING

### Overloading and Improper Use Can Result In Injury

#### To Avoid Injury:

- Do not exceed working load limit, load rating, or capacity.
- Do not use to lift people or loads over people.
- Use only alloy chain for overhead lifting.
- Read and follow all instructions.